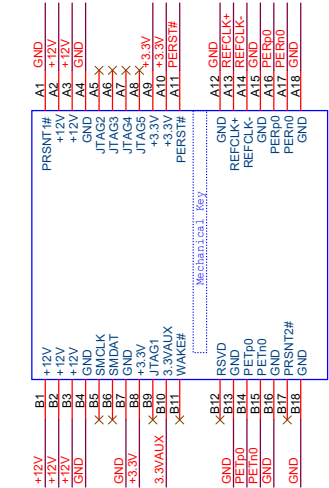
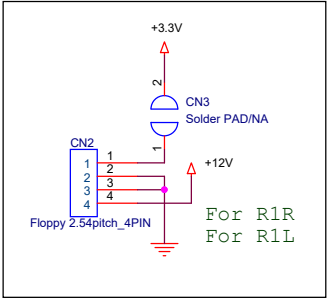
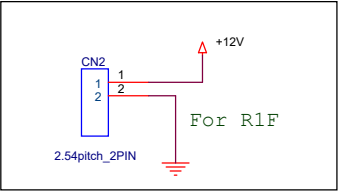


PCB Model Name: R1F / R1L /R1R V2.0  
Product Name: PCIe x1 to x1 Extender



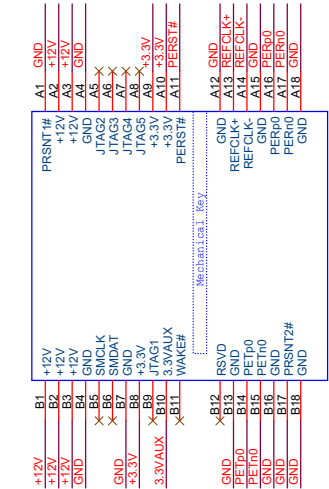
CN1  
PCIe x1 Connector

R1F / R1L / R1R V2.0



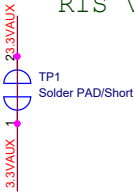
Rivision History

Date	Version	Description
20160803	1.0	First Release
20180803	2.0	Support 3.3VAUX power Support 12V/6.25A (75W) power consumption



CN1  
PCIe-X1-finger

R1S V1.0



PCB Model Name: R1S V2.0  
Product Name: PCIe x1 to x1 Extender

Title		
PCI Express x1 Extender		
Size	Document Number	Rev
A3	R11 series	
Date:	Tuesday, September 17, 2019	Sheet 1 of 1